



POVERTY, LIVELIHOOD AND POLITICAL REFORM

Business and Professionals Federation of Hong Kong
November 19, 2009

Leung Chun Ying
Convenor of the Non-Official Members of the Executive Council
www.cyleung.hk



**1996-2006 GROWTH OF
REAL GDP PER CAPITA:
34.4%**



ARE THE PEOPLE CONTENT?

- If not, why not?
- Why is allegation of collusion so powerful?

2008 LEGISLATIVE COUNCIL ELECTION RESULTS

Political Group	Vote ratio	Seats	Political Groups	Vote Ratio	Seats
DP (民主黨)	20.63%	7	DAB (民建聯)	22.92%	7
CP (公民黨)	13.66%	4	NF (新論壇)	1.35%	0
The Frontier (前线)	2.19%	1	Priscilla Leung (梁美芬)	1.31%	1
NWSC (街工)	2.80%	1	FTU (工聯會)	5.70%	2
Civic Act-up (公民起 動)	2.04%	1	LP (自由黨)	4.33%	0
CTU (職工盟)	3.49%	1	Regina Ip (葉劉淑儀)	4.03%	1
LSD (社民連)	10.12%	3			

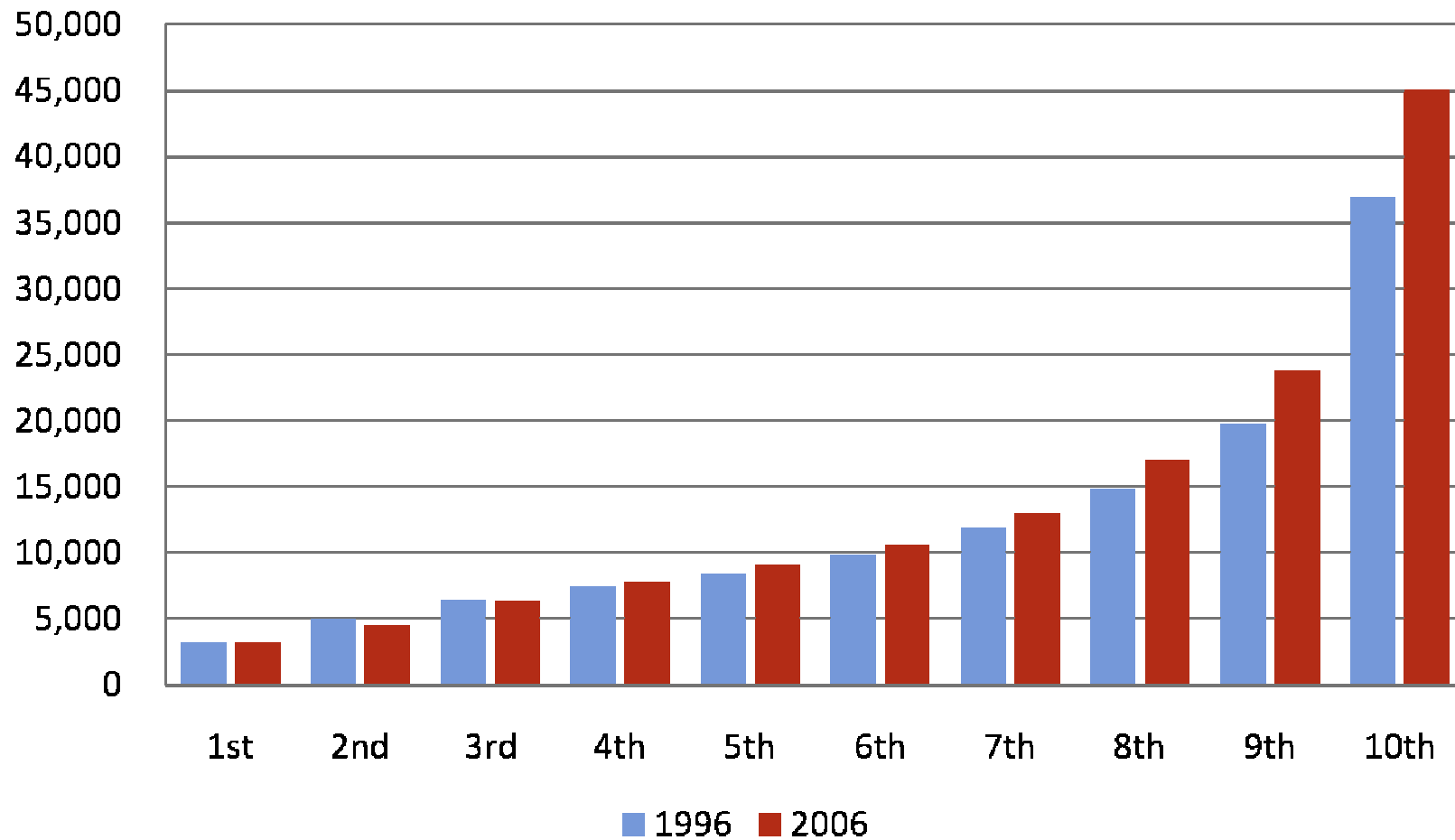


MEDIAN MONTHLY INCOME FROM MAIN EMPLOYMENT BY DECILE GROUP OF WORKING POPULATION 2006

Decile Group	Income (HKD)
1st	3,200
2nd	4,500
3rd	6,300
4th	7,700
5th	9,000
6th	10,500
7th	13,000
8th	17,000
9th	23,750
10th	45,000



MEDIAN MONTHLY INCOME FROM MAIN EMPLOYMENT (AT CONSTANT 2006 PRICE) BY DECILE GROUP OF WORKING POPULATION 1996 AND 2006



CHANGES IN AVERAGE MONTHLY WAGES

		Cleaner (General) (in sanitary and similar services)	Cleaner (lavatory) (in sanitary and similar services)	Guard (in security and detective services)
2006	Q4	5,073	4,850	6,941
2007	Q4	5,241	5,114	7,115
2008	Q4	5,335	5,165	7,298
2009	Q1	5,269	5,082	7,200
% Change from 2006Q4 to 2009Q1		+3.86%	+4.78%	+3.73%

Source: Quarterly Report of Wage and Payroll Statistics in March 2009

•**The Composite Consumer Price Index in the same period increased by 5.05%**

•Average daily working hours of the above occupation: 8、9 and 10 hours, average working days per month: 26, Average hourly wage: HKD 25.3、HKD 21.7 and HKD 27.7

•By March, 2009, there are 550,000 cleaners and 270,000 guards in Hong Kong



REAL WAGE INDICES (MARCH 2009)

Industry/ Broad Occupational Group	Real Wage Indices (Sep, 1992 = 100)
Chinese restaurants	95.7
Garments	87.5
Restaurants excluding Chinese restaurants	94.4
Fast food shops	80.6
Haulage of containers and containers leasing	70.1

Source : Quarterly Report of Wage and Payroll Statistics (March 2009)



HOUSING STOCK ('000 UNITS, AS AT 2008)

Net Area (sq. m)	A: Public Rental	B: Subsidized Sale	C: Private	A+B+C	Percentage	Cumulative Percentage		
<40	588	151	352	1,091	43.4%	43.4%		
40-59.9	140	488	421	1,048	41.7%	85.1%		
60-69.9	-	63	110	172	6.8%	91.9%		
70-99.9	-	-	125	125	5.0%	96.9%	15%	
>100	-	-	79	79	3.1%	100.0%		8.1%
Total	728	701	1,087	2,516	100.0%			

